

# Drawing Figures of Phonetic Decision Trees in L<sup>A</sup>T<sub>E</sub>X with PStricks

Keiichi Tokuda  
Nagoya Institute of Technology  
<http://kt-lab.ics.nitech.ac.jp/~tokuda/>

February 21, 2005

```
\documentclass{article}
\usepackage{pstricks,pst-node,pst-text,pst-3d,pst-tree}
...
\begin{document}
...
\begin{figure}
\begin{center}
\sffootnotesize
\pstree{\Toval{$R=\mbox{pretongue ?}$}}{
\pstree{\Toval{$R=\mbox{narrow ?}$}^{\yes}}{
\Toval{leaf}^{\yes}
\pstree{\Toval{$L=\mbox{pretongue ?}$}_{\no}}{
\Toval{leaf}^{\yes}
\Toval{leaf}_{\no}
}
}
\pstree{\Toval{$R=\mbox{halfnarrow ?}$}_{\no}}{
\Toval{leaf}^{\yes}
\Toval{leaf}_{\no}
}
}
\end{center}
\caption{A phonetic decision tree for the second state of /k/.}
\label{fig:tree1}
\end{figure}
```

```

\begin{figure}
\begin{center}
\sf\footnotesize
\pstree{\Tc{1em}~[tnpos=r]{$R=\mbox{pretongue ?}$}}{
\pstree{\Tc{1em}~[tnpos=r]{$R=\mbox{narrow ?}$}~{Y}}{
\Toval{leaf}~{Y}
\pstree{\Tc{1em}~[tnpos=r]{$L=\mbox{pretongue ?}$}_{N}}{
\Toval{leaf}~{Y}
\Toval{leaf}_{N}
}
}
\pstree{\Tc{1em}~[tnpos=r]{$R=\mbox{halfnarrow ?}$}_{N}}{
\Toval{leaf}~{Y}
\Toval{leaf}_{N}
}
}
\end{center}
\caption{A phonetic decision tree for the second state of /k/.}
\label{fig:tree2e}
\end{figure}

\end{document}

```

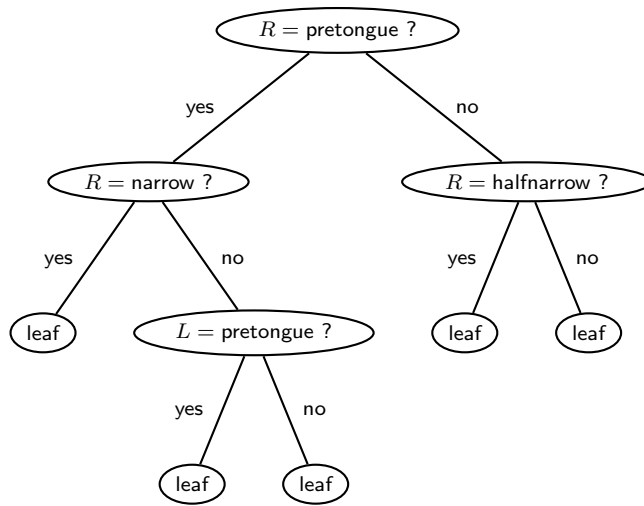


Figure 1: A phonetic decision tree for the second state of /k/.

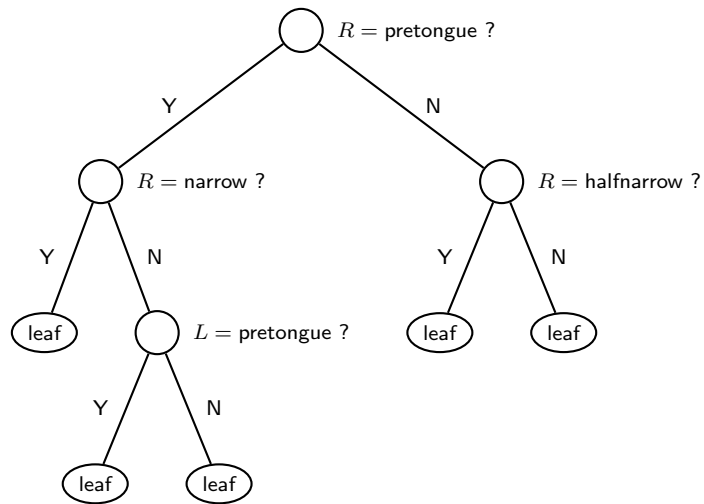


Figure 2: A phonetic decision tree for the second state of /k/.